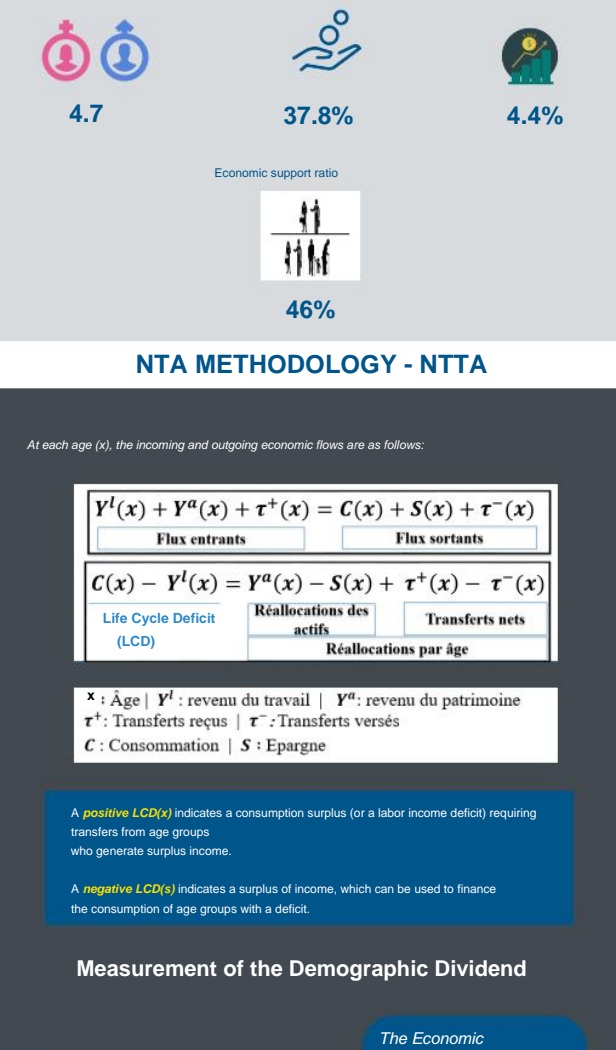


# FACTSHEET

# Machine

## DEMOGRAPHIC DIVIDEND

## IN SENEGAL



### NTA METHODOLOGY - NTTA

At each age (x), the incoming and outgoing economic flows are as follows:

$$Y^l(x) + Y^a(x) + \tau^+(x) = C(x) + S(x) + \tau^-(x)$$

Flux entrants (left) | Flux sortants (right)

$$C(x) - Y^l(x) = Y^a(x) - S(x) + \tau^+(x) - \tau^-(x)$$

Life Cycle Deficit (LCD) | Réallocations des actifs | Transferts nets

Réallocations par âge

$x$ : Âge |  $Y^l$ : revenu du travail |  $Y^a$ : revenu du patrimoine  
 $\tau^+$ : Transferts reçus |  $\tau^-$ : Transferts versés  
 $C$ : Consommation |  $S$ : Epargne

A **positive LCD(x)** indicates a consumption surplus (or a labor income deficit) requiring transfers from age groups who generate surplus income.

A **negative LCD(s)** indicates a surplus of income, which can be used to finance the consumption of age groups with a deficit.

### Measurement of the Demographic Dividend

The **Economic Support Ratio (ESR)** represents the ratio between the number of effective producers over the number of effective consumers.

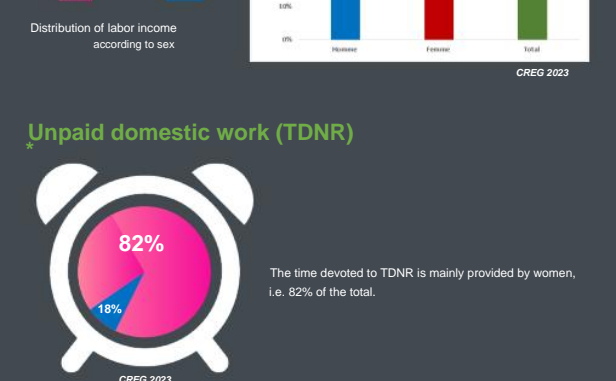
The growth rate of the economic support ratio represents the measurement of the 1st Demographic Dividend.

### Identity of the NTTAs

At each age (x), we have:

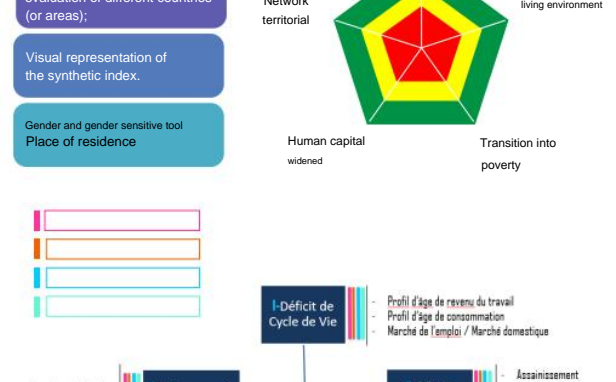
### RESULTS

#### Income from work and level of consumption over the life cycle



The surplus generated by economically independent individuals, estimated at 2,484 billion FCFA in 2019, only covers half of the deficit for youth (4,924 billion FCFA) and old age (427 billion FCFA).

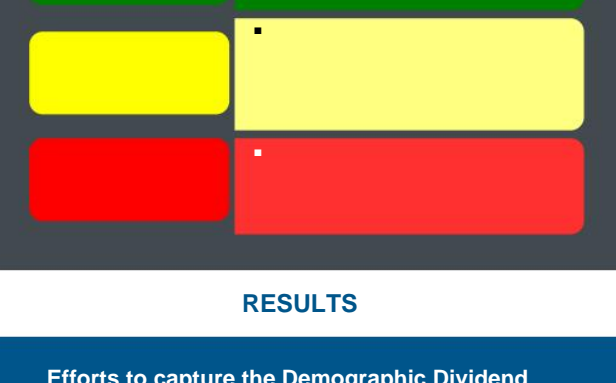
#### Economic support ratio and first dividend population in Senegal from 1950 to 2100



#### Wealth creation by gender

**Paid work**

In 2019, labor income represents 49% of GDP and is mainly produced by men at 67%.

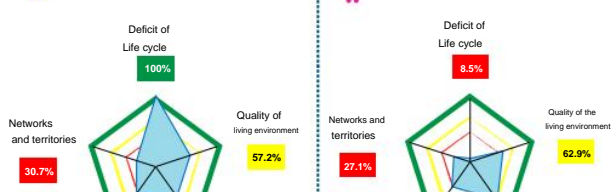


#### Unpaid domestic work (TDNR)

The time devoted to TDNR is mainly provided by women, i.e. 82% of the total.



Valued, the TDNR represents 20% of 2019 GDP



### DIVIDEND MONITORING INDICATOR DEMOGRAPHIC (DDMI)

Synthetic tool that facilitates understanding of the whole SD information;

HDD and System Tracking evaluation of different countries (or areas);

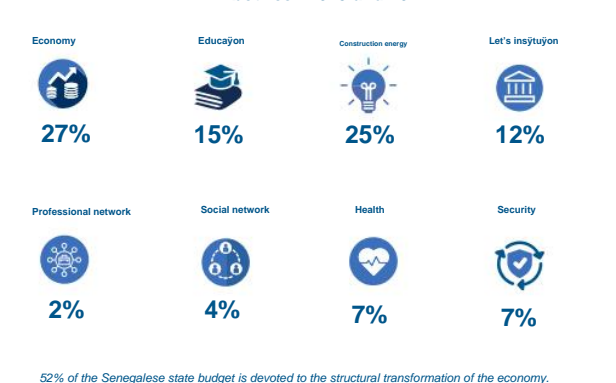
Visual representation of the synthetic index.

Gender and gender sensitive tool

Place of residence

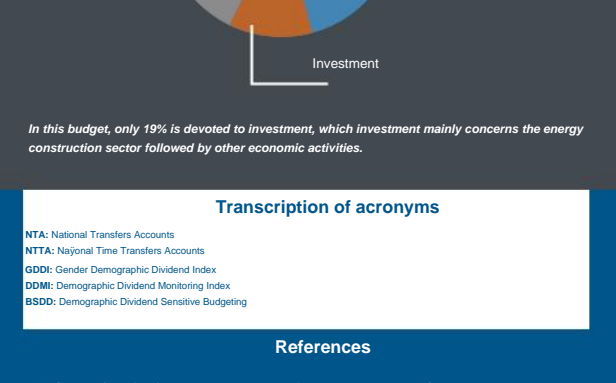


#### How to interpret the DDMI?



### RESULTS

#### Efforts to capture the Demographic Dividend



In 2019, Senegal is 1 percentage point away from starting to optimally exploit its demographic potential.

Even if efforts were made between 2011 and 2019, the territorial network of infrastructures as well as the mobility of human and financial resources are still insufficient to fully exploit the demographic dividend.

#### Gender-specific efforts to Capture the Dividend Demographic



#### OPTIMAL BUDGETARY ALLOCATION FOR CATCHING OF THE DEMOGRAPHIC DIVIDEND: BSDD



### RESULTS

#### Functional transformation of the following development actions



#### Share of each budgetary function in the budget between 2019 and 2021



52% of the Senegalese state budget is devoted to the structural transformation of the economy. The capital represents 22% of the budget.

#### Allocation of public expenditure according to budgetary nature between 2019 and 2021



In this budget, only 19% is devoted to investment, which investment mainly concerns the energy construction sector followed by other economic activities.

#### Transcription of acronyms

- NTA: National Transfers Accounts
- NTTA: National Time Transfers Accounts
- GDDI: Gender Demographic Dividend Index
- DDMI: Demographic Dividend Monitoring Index
- BSDD: Demographic Dividend Sensitive Budgeting

#### References

- ONDD Senegal - CREG (2022): Report on the measurement of the demographic dividend in Senegal.
- ONDD Senegal - CREG (2022): Monitoring report on the demographic dividend in Senegal. In press.
- ONDD Senegal-CREG (2021): Report on unpaid domestic work in Senegal. In press.
- ONDD Senegal-CREG (2023): Report on Budgeting Sensitive to the Demographic Dividend. Below press.

#### Our thanks to the partners

Support for the CREG was provided by: the William and Flora Hewlett foundation; the Women's Empowerment and Demographic Dividend in the Sahel (SWEDD) project; the United Nations Population Fund (UNFPA); the Sub-Regional Office of the United Nations Economic Commission for Africa (ECA-BSR); the World Bank; Population Reference Bureau (PRB).



#### Editorial team

Scientific Committee: Pr. Layf DRAMANI, Dr. Camille GUIDIME Redaction: Knowledge and Policy Department Translation: CREG Cabinet Editing and Computer Graphics: IT Team Webmaster: IT Team

Contributors: Koal Edem AKPO, Edmee Marthe Y. NDOYE, Sabin Nendobe DOBAH, Mama Couara NDAYE KAMA, Jean Maurice GOMIS, Fatou THIOYE, Ousmane Kanté

To quote: DRAMANI L., GUIDIME C., et al (2023). Dividend capture factsheet Demographics in Senegal. CREG-Bulletin vol 2