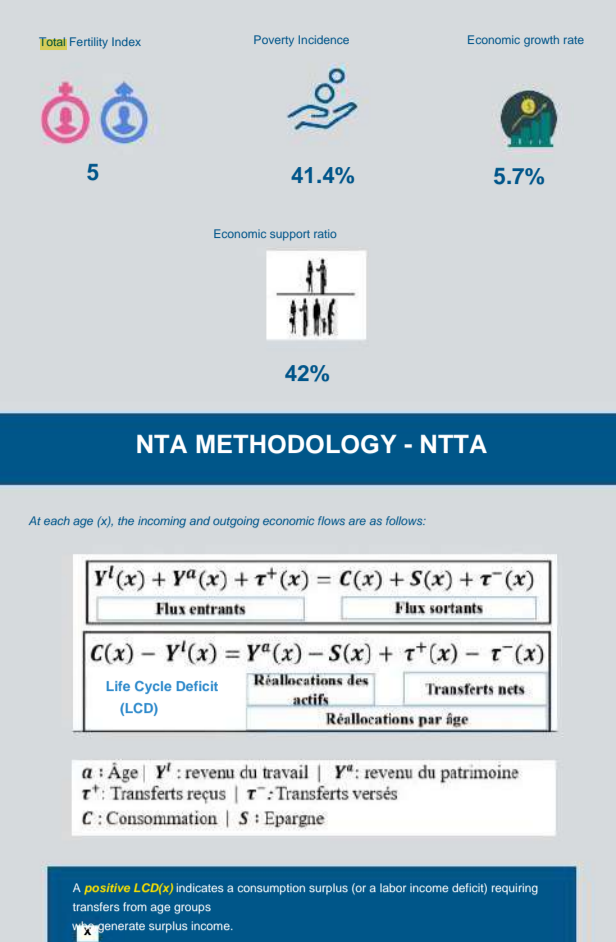


# FACTSHEET

# Machine

## DEMOGRAPHIC DIVIDEND

## IN BURKINA FASO



### NTA METHODOLOGY - NTA

At each age (x), the incoming and outgoing economic flows are as follows:

$$Y^l(x) + Y^a(x) + \tau^+(x) = C(x) + S(x) + \tau^-(x)$$

Flux entrants = Flux sortants

$$C(x) - Y^l(x) = Y^a(x) - S(x) + \tau^+(x) - \tau^-(x)$$

Life Cycle Deficit (LCD) = Réallocations des actifs = Transferts nets

Réallocations par âge

$\alpha$ : Âge |  $Y^l$ : revenu du travail |  $Y^a$ : revenu du patrimoine  
 $\tau^+$ : Transferts reçus |  $\tau^-$ : Transferts versés  
 $C$ : Consommation |  $S$ : Epargne

A **positive LCD(x)** indicates a consumption surplus (or a labor income deficit) requiring transfers from age groups who generate surplus income.

A **negative LCD(s)** indicates a surplus of income, which can be used to finance the consumption of age groups with a deficit.

#### Measurement of the Demographic Dividend

The **Economic Support Ratio (ESR)** represents the ratio between the number of effective producers over the number of effective consumers.

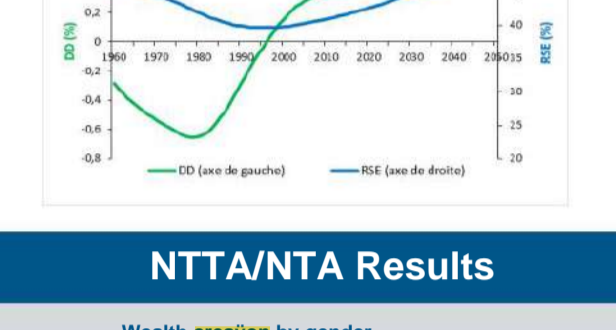
The growth rate of the economic support ratio represents the measurement of the 1st Demographic Dividend

### Identity of the NTTAs

At each age (x), we have:

### RESULTS

#### Income from work and level of consumption over the life cycle



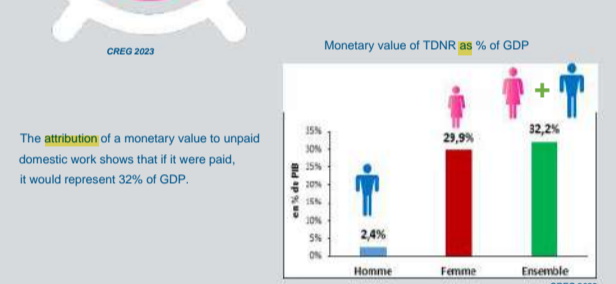
Rayo of economic support and the first demographic dividend in Burkina Faso from 1960 to 2050

### NTA/NTA Results

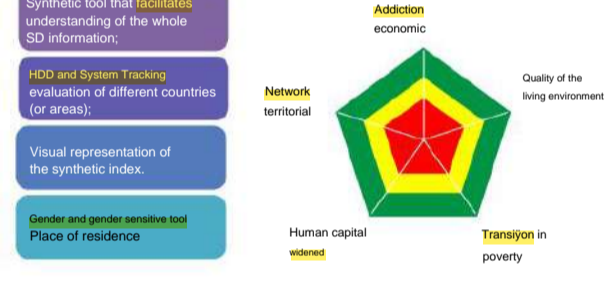
#### Wealth creation by gender

**Paid work**

In 2019, labor income represents 56% of GDP and is mainly produced by men at 57%.



#### Proportion of men and women in valued domestic work



Monetary value of TDR as % of GDP

2.4% (Men), 29.9% (Women), 32.2% (Total).

### DIVIDEND MONITORING INDICATOR DEMOGRAPHIC (DDMI)

Synthetic tool that facilitates understanding of the whole SD information.

HDD and System Tracking evaluation of different countries (or areas);

Visual representation of the synthetic index.

Gender and gender sensitive tool

Place of residence

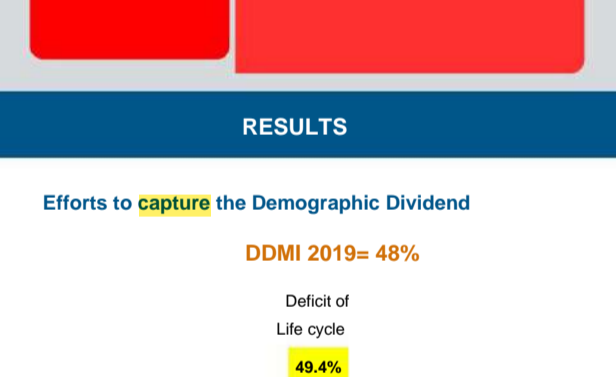
Network territorial

Addition economic

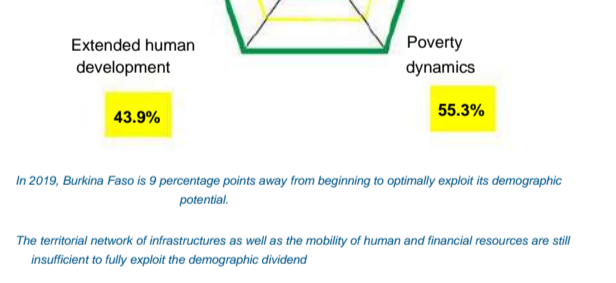
Quality of the living environment

Human capital widened

Transjion in poverty

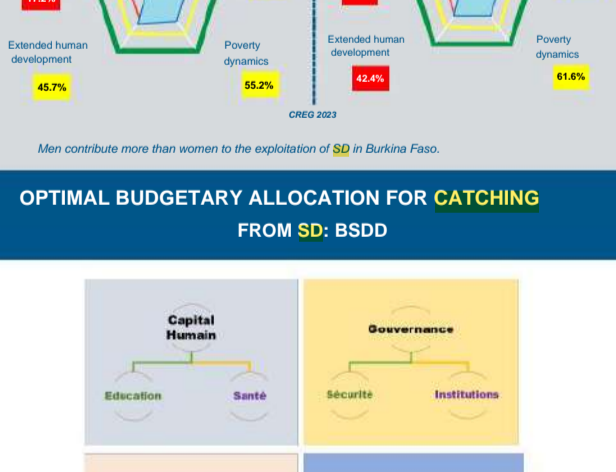


#### How to interpret the DDMI?

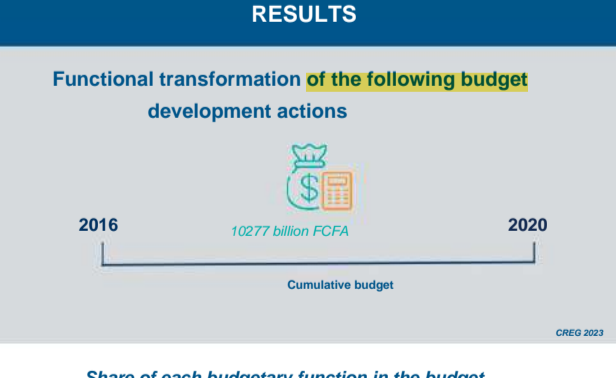


### RESULTS

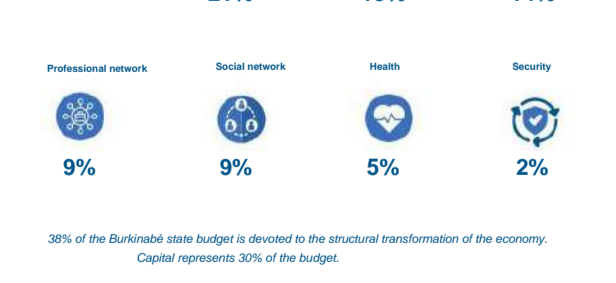
#### Efforts to capture the Demographic Dividend



#### Gender-specific efforts to Capture the Dividend Demographic



### OPTIMAL BUDGETARY ALLOCATION FOR CATCHING FROM SD: BSDD



### RESULTS

Functional transformation of the following budget development actions

2016 - 2020: Cumulative budget: 10277 billion FCFA

Share of each budgetary function in the budget between 2016 and 2020



Allocation of public expenditure according to budgetary nature between 2016 and 2020

44% Operation, 36% Investment, 20% Transfers.

In this budget, more than a third is devoted to investment.

Transcription of acronyms

NTA: National Transfers Accounts  
 NTTA: National Time Transfers Accounts  
 HDD: Gender Demographic Dividend Index  
 DDMI: Demographic Dividend Monitoring Index  
 BSDD: Demographic Dividend Sensitive Budgeting

References

ONDD Burkina Faso - CREG (2022): Report on the measurement of the demographic dividend in Burkina Faso. In press.

ONDD Burkina Faso - CREG (2022): Report on the demographic dividend in Burkina Faso. In press.

ONDD Burkina Faso - CREG (2021): Report on unpaid domestic work in Burkina Faso. In press.

ONDD Burkina Faso - CREG (2023): Report on Budgeting Sensitive to the Demographic Dividend. In press.

Our thanks to the partners

Support for the CREG was provided by: the William and Flora Hewlett foundation; the Women's Empowerment and Demographic Dividend in the Sahel (SWEDD) project; the United Nations Population Fund (UNFPA); the Sub-Regional Office of the United Nations Economic Commission for Africa (ECA-BSR); the World Bank; Population Reference Bureau (PRB).

Editorial team

Scientific Committee: Pr. Layi DRAMANI, Dr. Camille GUIDIME  
 Rédaction: Knowledge and Policy Department  
 Translation: Cabinet du CREG  
 Editing and Computer Graphics: IT Team  
 Webmaster: IT Team

Contributors: Edem AKPO, Kossi Edem AKPO, Edmée Marthe Y. NDOYE, Sabina Nindobe OUSAR, Mama Coussa NDIAYE KAMA, Jean Maurice GOMS, Fatou THIOYE, Ousmane Kanté

To quote: DRAMANI L., GUIDIME C., et al (2023). Dividend capture factsheet demography in Burkina Faso. CREG-Bulletin vol 2

Grand Standing, Rue 01441 - Char Mkhaye Deut / 998, Thésè - Soudgèl  
 (+203) 31 951 45 44  
 assistanat.creg@creg-center.org  
 https://creg-center.org